

PATHS® Overview

University of Manchester- 2nd March 2012



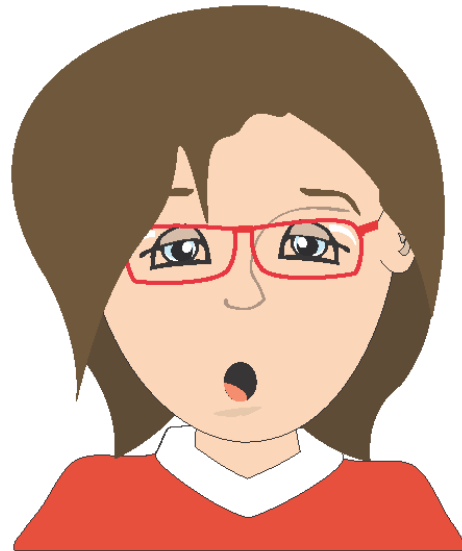
Paul Edwards

Barnardo's PATHS® UK
Programme Manager

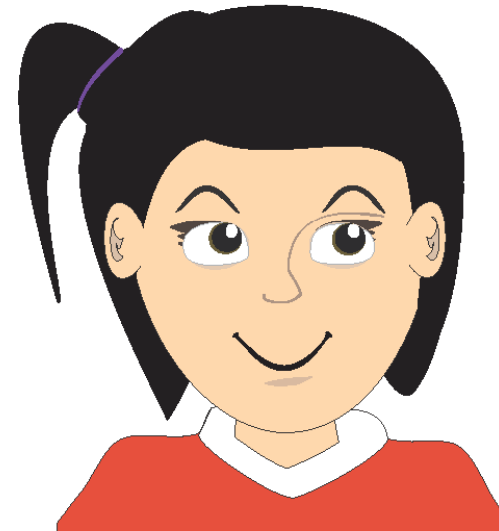
paul.edwards@barnardos.org.uk

T: 028 90 672366

Hello!



TIRED



HOPEFUL

What is PATHS®?

- Promoting
- Alternative
- THinking
- Strategies



- An evidence-based social and emotional learning developmental programme aimed at 4/5 – 11 year olds (primary age)
- A programme that teaches pro-social skills, emotion understanding, social problem-solving and self-control
- A Universal whole-school programme that seeks to change/build upon a school's ethos and culture

Conceptual Domains

PATHS covers five domains of SEL development:

- self-control
- emotional understanding
- positive self-esteem
- relationships
- interpersonal problem-solving skills

What it looks like

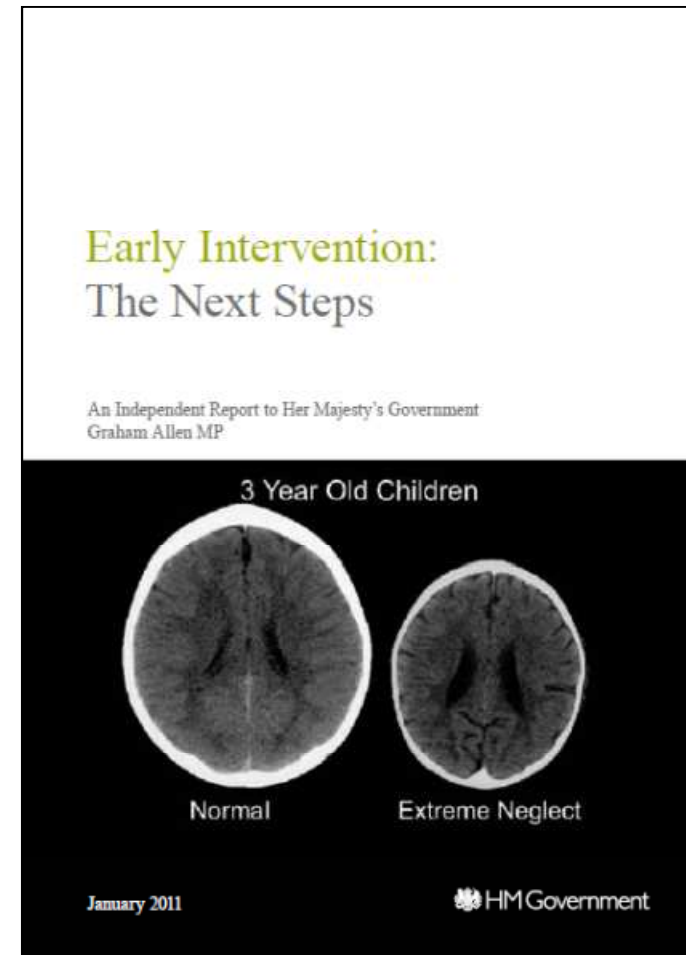
- Fully scripted lessons provided for teachers to implement in programme packs 30/40+ lessons each year
- Developmental – builds on learning in each year
- Programme implementation traditionally supported by training and technical assistance to ensure programme fidelity and maximise outcomes



Why PATHS?

- Originally developed for working with deaf children
- Adapted and used in mainstream settings
- Recognised as a Blueprints' Model program by the Blueprints Center for the Study and Prevention of Violence – only universal classroom based one
- CASEL Select Program
- SAMHSA Model Program

One of 19 Level 1 programmes recommended by Graham Allen's Commission on Early Intervention and Prevention – only universal SEL classroom based program to achieve this



What did we do?

- We have adapted, contextualised and designed PATHS for a UK and Ireland audience – over 2 years of work.
- Supported the implementation in 12 local schools – RCT being carried out
- Ensured that teachers and schools were delivering the programme with fidelity
- Monitor interim evaluation results and address issues as far as possible
- Worked WITH schools